

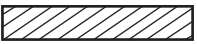


Whitehall Condominium
2420 Beacon Street
Brighton, MA 02467

I hereby certify that this plan shows the unit designation of the unit being conveyed and of immediately adjoining units and that it fully and accurately depicts the layout of the unit, its location, approximate dimensions, approximate area, main entrance, and immediate common areas to which it has access as built. I also certify that this plan was prepared in accordance with the rules and regulations of the Massachusetts registrar of deeds as amended January 1 1976.

GUNDPARTNERSHIP
Graham Gund
Registered Architect
November 29,2006

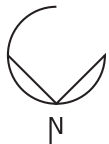
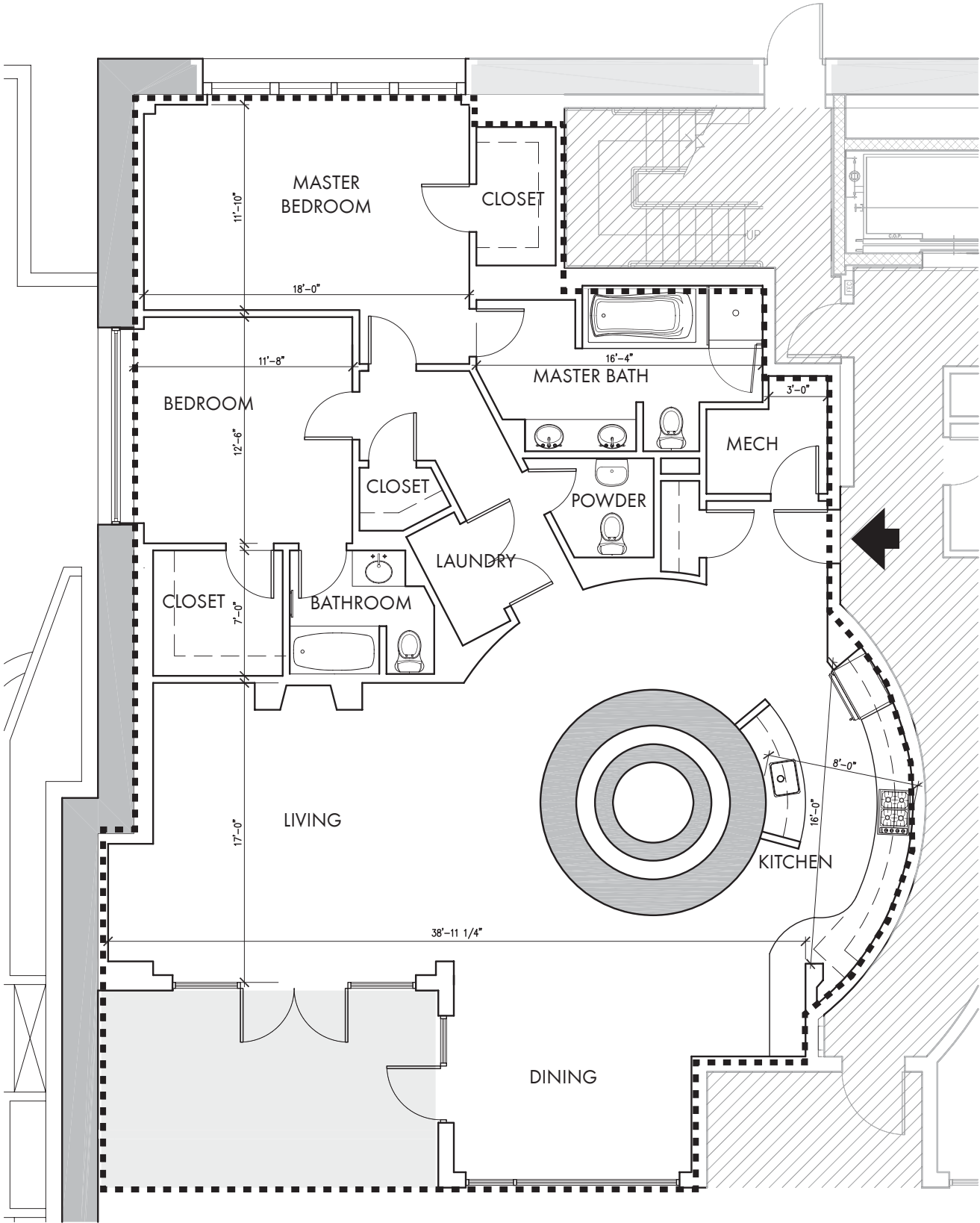
Unit: **101**
Approximate Int. Area : 2010 sqft
Approximate Ext.
Limited Common
Element Area: 200 sqft

Drawing Key:

Line of Limit of Ownership:
Common Area:	
Unit Entrance:	
Exterior Limited Common Element Area:	

prepared by:
GUND PARTNERSHIP
47 THORNDIKE STREET
CAMBRIDGE, MA 02141
(617)250-6800

Aprox. Scale 1/8" = 1-0"



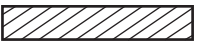


Whitehall Condominium
2420 Beacon Street
Brighton, MA 02467

I hereby certify that this plan shows the unit designation of the unit being conveyed and of immediately adjoining units and that it fully and accurately depicts the layout of the unit, its location, approximate dimensions, approximate area, main entrance, and immediate common areas to which it has access as built. I also certify that this plan was prepared in accordance with the rules and regulations of the Massachusetts registrar of deeds as amended January 1 1976.

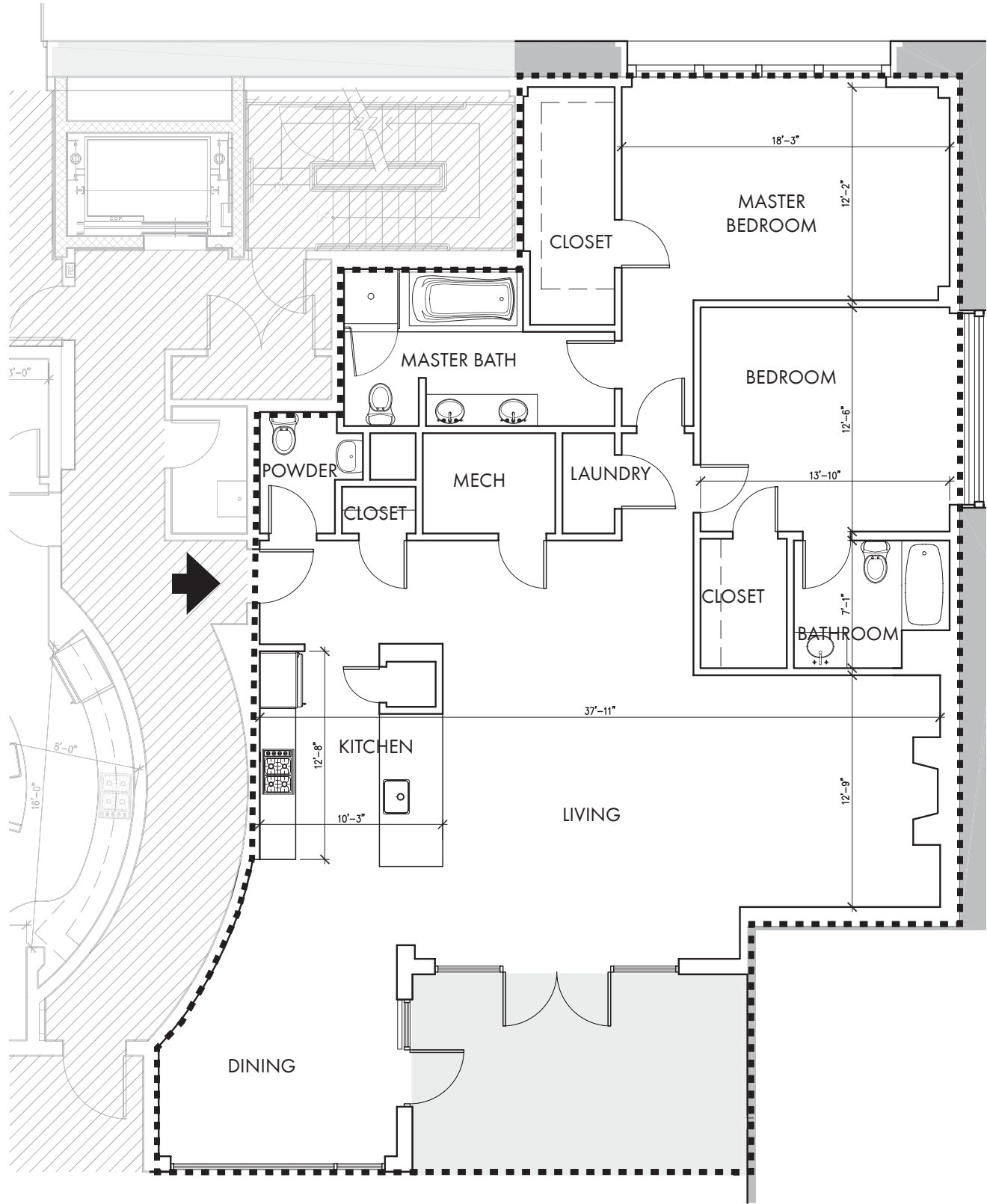
GUNDPARTNERSHIP
Graham Gund
Registered Architect
November 29,2006

Unit: **102**
Approximate Int. Area : 1883 sqft
Approximate Ext.
Limited Common
Element Area: 211 sqft

Drawing Key:

Line of Limit of Ownership:
Common Area:	
Unit Entrance:	
Exterior Limited Common Element Area:	

prepared by:
GUND PARTNERSHIP
47 THORNDIKE STREET
CAMBRIDGE, MA 02141
(617)250-6800



Aprox. Scale 1/8" = 1-0"



I hereby certify that this plan shows the unit designation of the unit being conveyed and of immediately adjoining units and that it fully and accurately depicts the layout of the unit, its location, approximate dimensions, approximate area, main entrance, and immediate common areas to which it has access as built. I also certify that this plan was prepared in accordance with the rules and regulations of the Massachusetts registrar of deeds as amended January 1 1976.

GUNDPARTNERSHIP


Graham Gund
Registered Architect
November 29,2006


Unit: **201**


Approximate Int. Area : 2044 sqft
Approximate Ext.
Limited Common
Element Area: 211 sqft

Drawing Key:

Line of Limit of Ownership: - - - - -

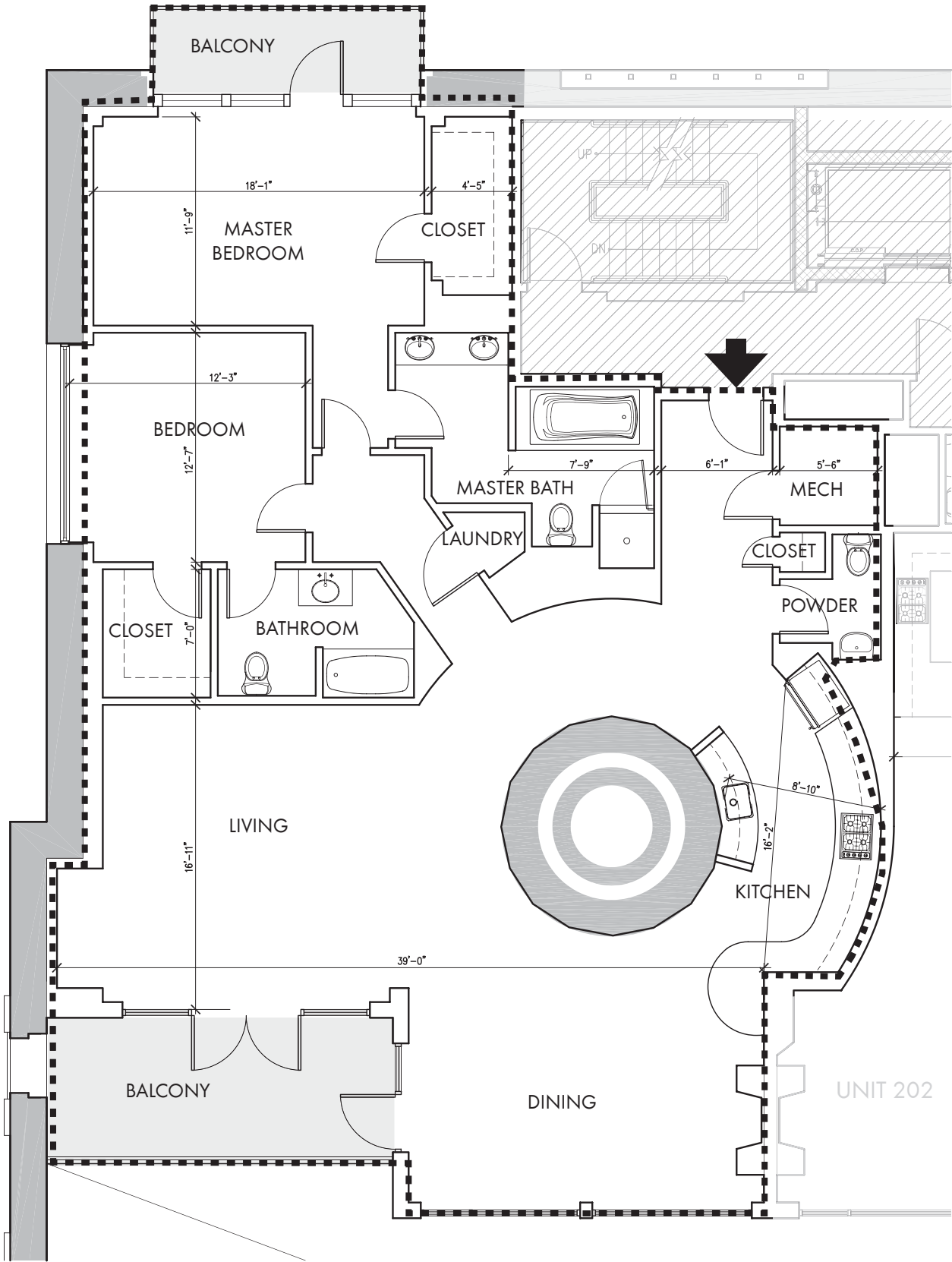
Common Area: 

Unit Entrance: 

Exterior Limited Common Element Area: 

prepared by:
GUND PARTNERSHIP
47 THORNDIKE STREET
CAMBRIDGE, MA 02141
(617)250-6800

Aprox. Scale 1/8" = 1-0"






I hereby certify that this plan shows the unit designation of the unit being conveyed and of immediately adjoining units and that it fully and accurately depicts the layout of the unit, its location, approximate dimensions, approximate area, main entrance, and immediate common areas to which it has access as built. I also certify that this plan was prepared in accordance with the rules and regulations of the Massachusetts registrar of deeds as amended January 1 1976.

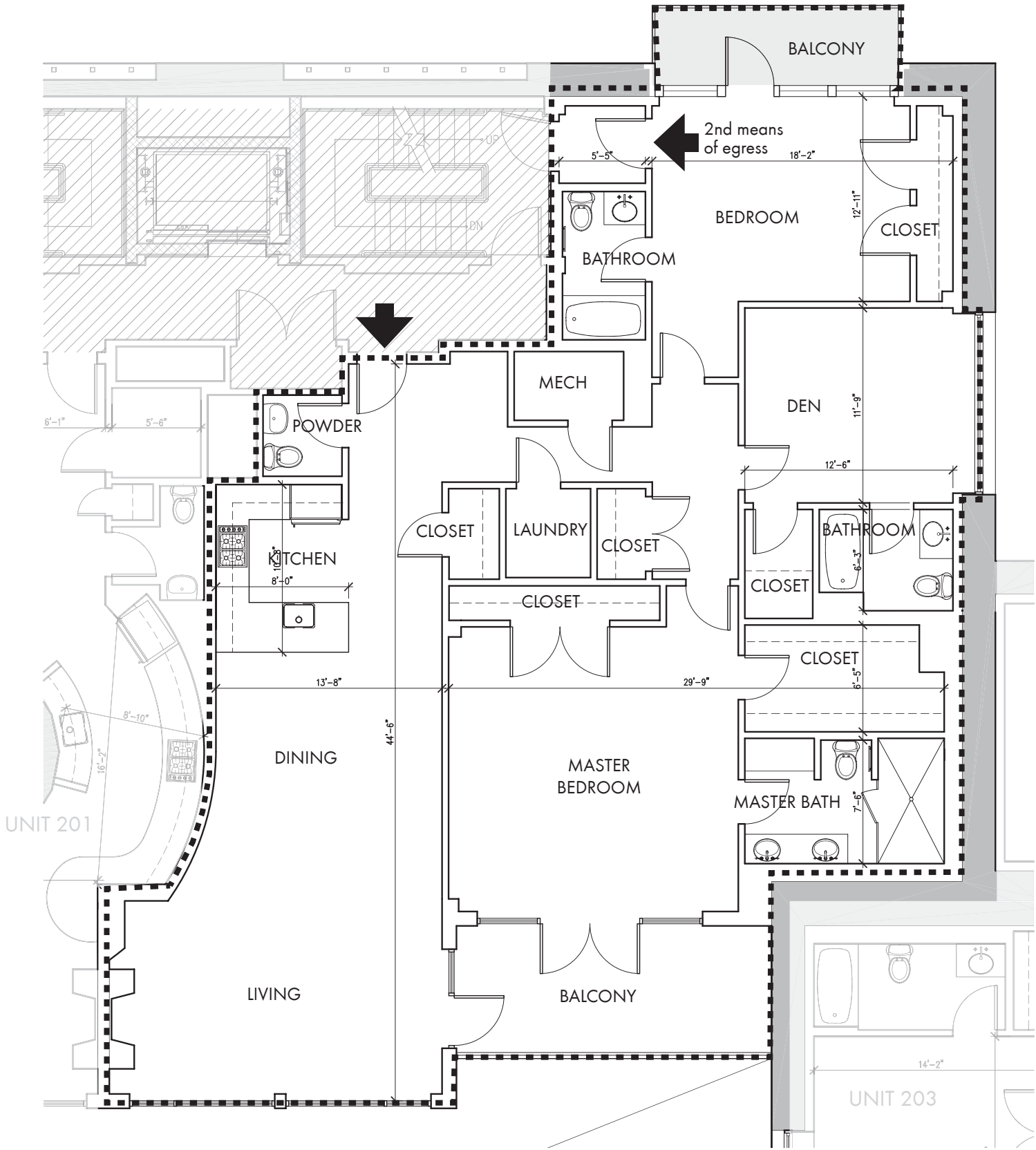
GUNDPARTNERSHIP
Graham Gund
Registered Architect
November 29,2006

Unit: **202**
Approximate Int. Area : 2118 sqft
Approximate Ext.
Limited Common
Element Area: 32 sqft

Drawing Key:

Line of Limit of Ownership:
Common Area:	
Unit Entrance:	
Exterior Limited Common Element Area:	

prepared by:
GUND PARTNERSHIP
47 THORNDIKE STREET
CAMBRIDGE, MA 02141
(617)250-6800



Aprox. Scale 1/8" = 1-0"



Whitehall Condominium
2420 Beacon Street
Brighton, MA 02467

I hereby certify that this plan shows the unit designation of the unit being conveyed and of immediately adjoining units and that it fully and accurately depicts the layout of the unit, its location, approximate dimensions, approximate area, main entrance, and immediate common areas to which it has access as built. I also certify that this plan was prepared in accordance with the rules and regulations of the Massachusetts registrar of deeds as amended January 1 1976.

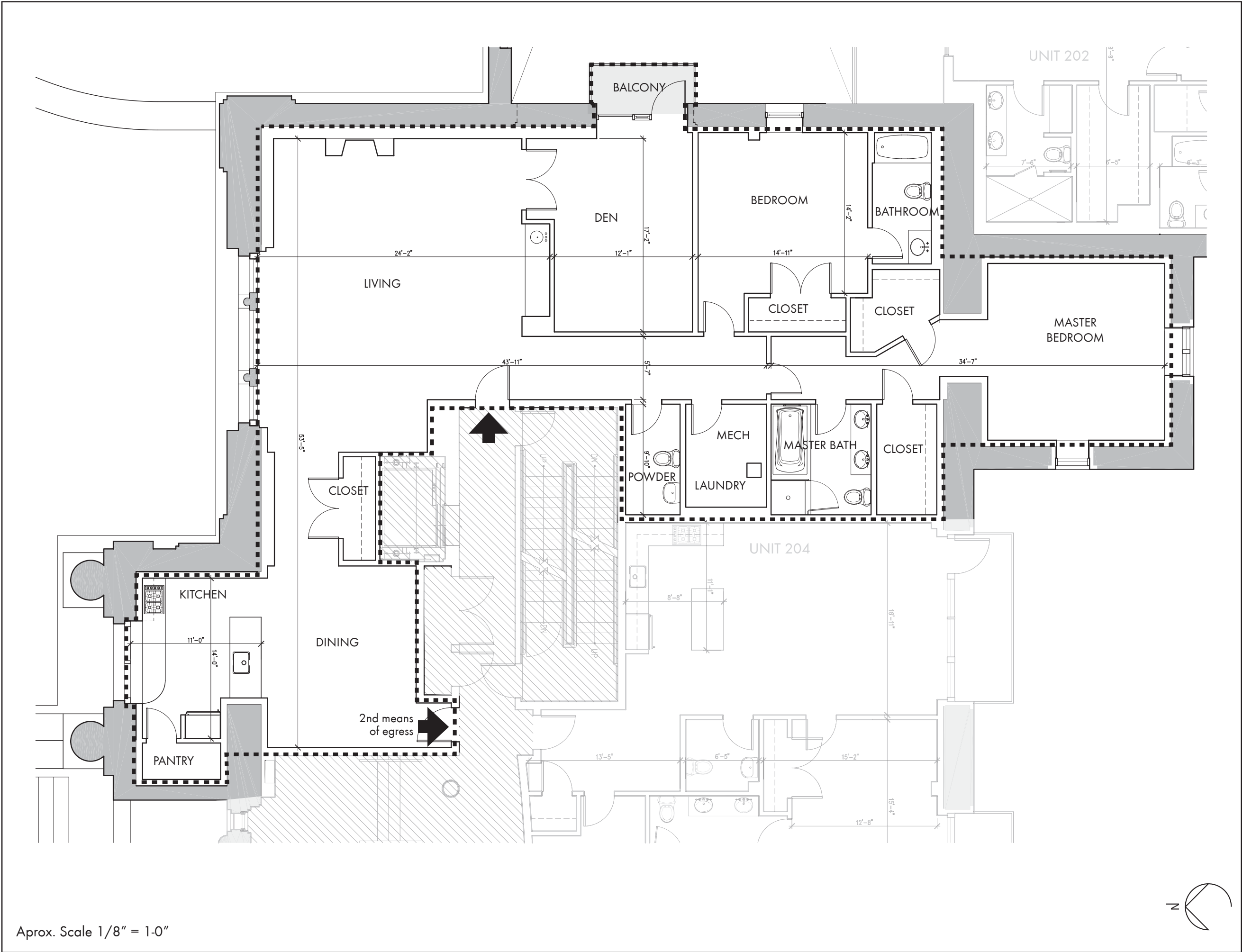
GUNDPARTNERSHIP
Graham Gund
Registered Architect
November 29,2006

Unit: **203**
Approximate Int. Area : 2647 sqft
Approximate Ext.
Limited Common
Element Area: 95 sqft

Drawing Key:

Line of Limit of Ownership:	-----
Common Area:	
Unit Entrance:	
Exterior Limited Common Element Area:	

prepared by:
GUND PARTNERSHIP
47 THORNDIKE STREET
CAMBRIDGE, MA 02141
(617)250-6800



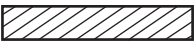


Whitehall Condominium
2420 Beacon Street
Brighton, MA 02467

I hereby certify that this plan shows the unit designation of the unit being conveyed and of immediately adjoining units and that it fully and accurately depicts the layout of the unit, its location, approximate dimensions, approximate area, main entrance, and immediate common areas to which it has access as built. I also certify that this plan was prepared in accordance with the rules and regulations of the Massachusetts registrar of deeds as amended January 1 1976.

GUNDPARTNERSHIP
Graham Gund
Registered Architect
November 29,2006

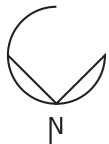
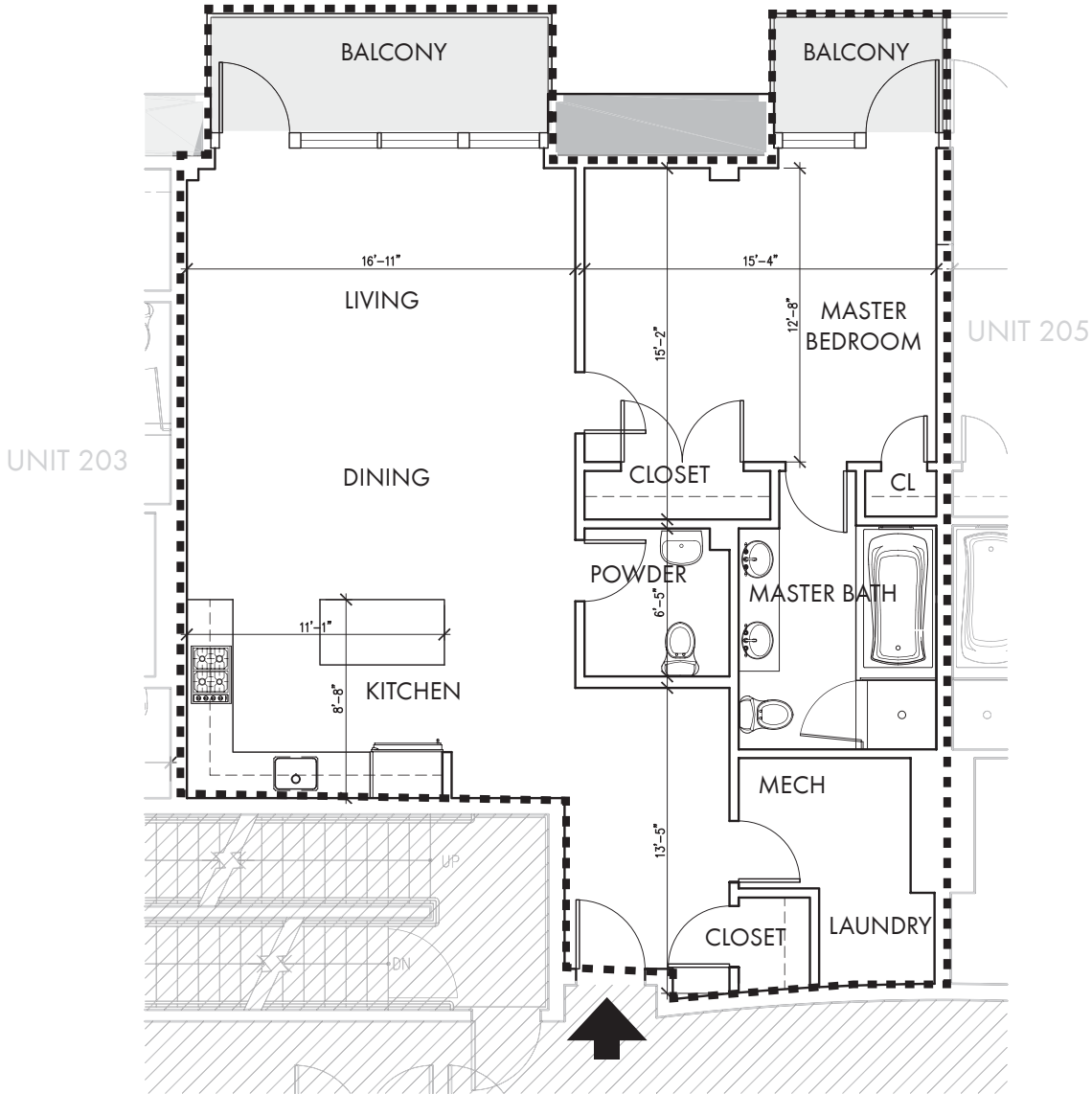
Unit: **204**
Approximate Int. Area : 1100 sqft
Approximate Ext.
Limited Common
Element Area: 95 sqft

Drawing Key:

Line of Limit of Ownership:
Common Area:	
Unit Entrance:	
Exterior Limited Common Element Area:	

prepared by:
GUND PARTNERSHIP
47 THORNDIKE STREET
CAMBRIDGE, MA 02141
(617)250-6800

Aprox. Scale 1/8" = 1-0"



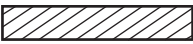


Whitehall Condominium
2420 Beacon Street
Brighton, MA 02467

I hereby certify that this plan shows the unit designation of the unit being conveyed and of immediately adjoining units and that it fully and accurately depicts the layout of the unit, its location, approximate dimensions, approximate area, main entrance, and immediate common areas to which it has access as built. I also certify that this plan was prepared in accordance with the rules and regulations of the Massachusetts registrar of deeds as amended January 1 1976.

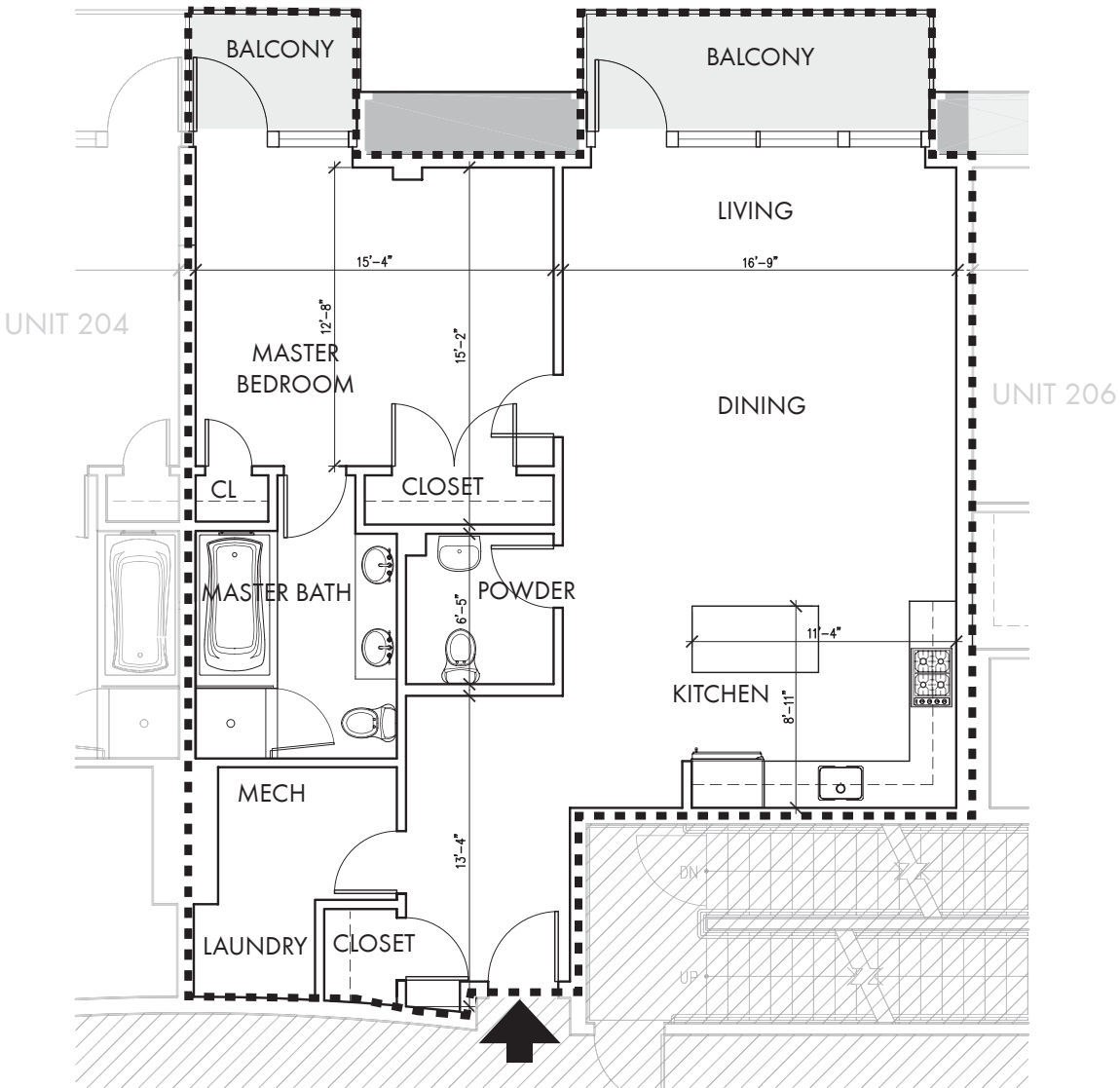
GUNDPARTNERSHIP
Graham Gund
Registered Architect
November 29,2006

Unit: **205**
Approximate Int. Area : 1093 sqft
Approximate Ext.
Limited Common
Element Area: 63 sqft

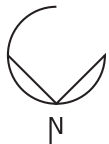
Drawing Key:

Line of Limit of Ownership:
Common Area:	
Unit Entrance:	
Exterior Limited Common Element Area:	

prepared by:
GUND PARTNERSHIP
47 THORNDIKE STREET
CAMBRIDGE, MA 02141
(617)250-6800



Aprox. Scale 1/8" = 1-0"






Whitehall Condominium
2420 Beacon Street
Brighton, MA 02467

I hereby certify that this plan shows the unit designation of the unit being conveyed and of immediately adjoining units and that it fully and accurately depicts the layout of the unit, its location, approximate dimensions, approximate area, main entrance, and immediate common areas to which it has access as built. I also certify that this plan was prepared in accordance with the rules and regulations of the Massachusetts registrar of deeds as amended January 1 1976.

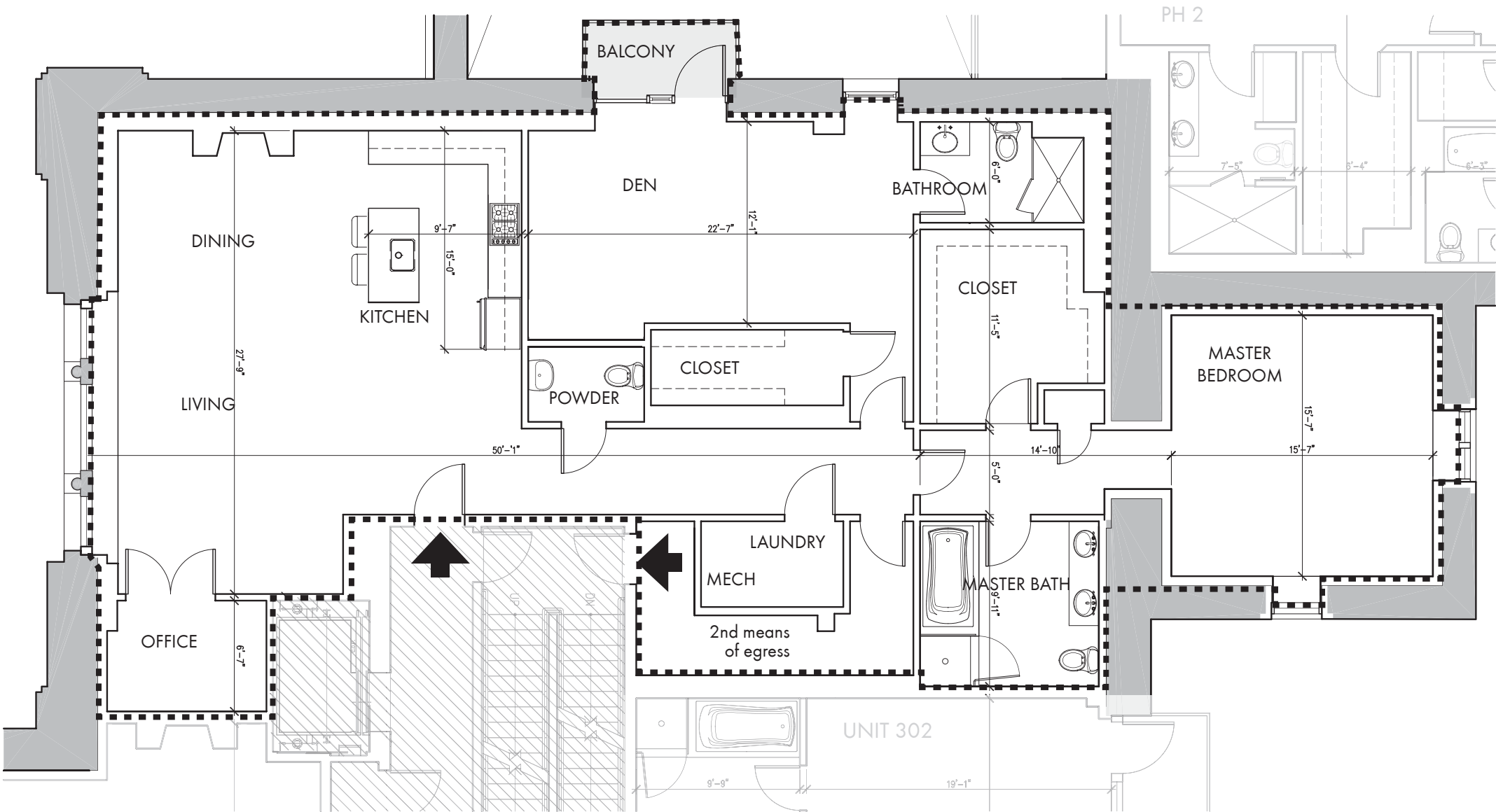
GUNDPARTNERSHIP
Graham Gund
Registered Architect
November 29,2006

Unit: **301**
Approximate Int. Area : 2243 sqft
Approximate Ext.
Limited Common
Element Area: 42 sqft

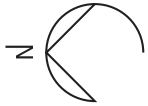
Drawing Key:

Line of Limit of Ownership:
Common Area:	
Unit Entrance:	
Exterior Limited Common Element Area:	

prepared by:
GUND PARTNERSHIP
47 THORNDIKE STREET
CAMBRIDGE, MA 02141
(617)250-6800



Aprox. Scale 1/8" = 1'-0"



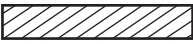
I hereby certify that this plan shows the unit designation of the unit being conveyed and of immediately adjoining units and that it fully and accurately depicts the layout of the unit, its location, approximate dimensions, approximate area, main entrance, and immediate common areas to which it has access as built. I also certify that this plan was prepared in accordance with the rules and regulations of the Massachusetts registrar of deeds as amended January 1 1976.


GUNDPARTNERSHIP
Graham Gund
Registered Architect
November 29,2006


Unit: **302**
Approximate Int. Area : 1895 sqft
Approximate Ext.
Limited Common
Element Area: 94 sqft

Drawing Key:

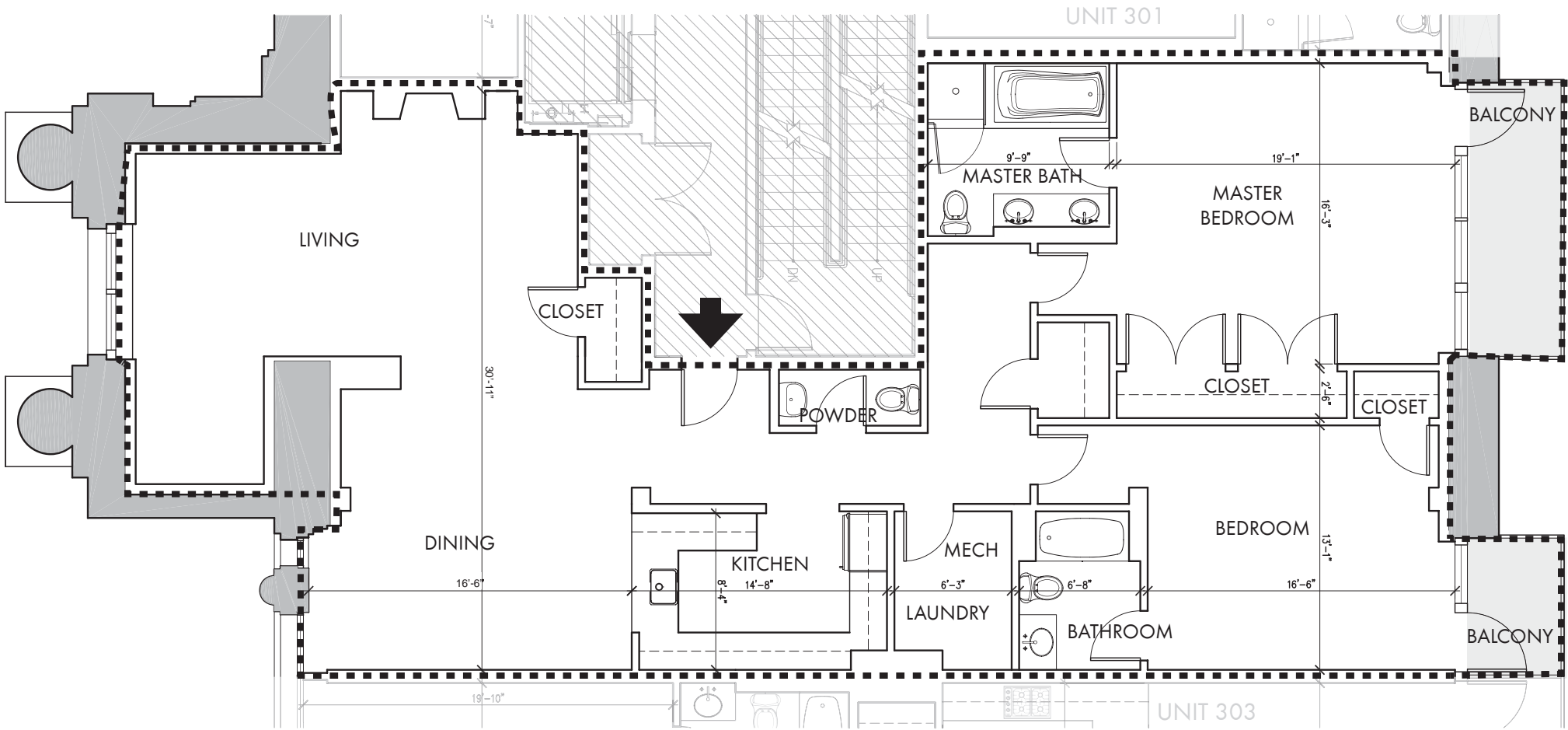
Line of Limit of Ownership: - - - - -

Common Area: 

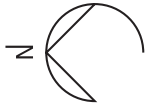
Unit Entrance: 

Exterior Limited Common Element Area: 

prepared by:
GUND PARTNERSHIP
47 THORNDIKE STREET
CAMBRIDGE, MA 02141
(617)250-6800



Aprox. Scale 1/8" = 1-0"



I hereby certify that this plan shows the unit designation of the unit being conveyed and of immediately adjoining units and that it fully and accurately depicts the layout of the unit, its location, approximate dimensions, approximate area, main entrance, and immediate common areas to which it has access as built. I also certify that this plan was prepared in accordance with the rules and regulations of the Massachusetts registrar of deeds as amended January 1 1976.

GUNDPARTNERSHIP
Graham Gund
Registered Architect
November 29,2006

Unit: **303**
Approximate Int. Area : 1883 sqft
Approximate Ext.
Limited Common
Element Area: 94 sqft

Drawing Key:

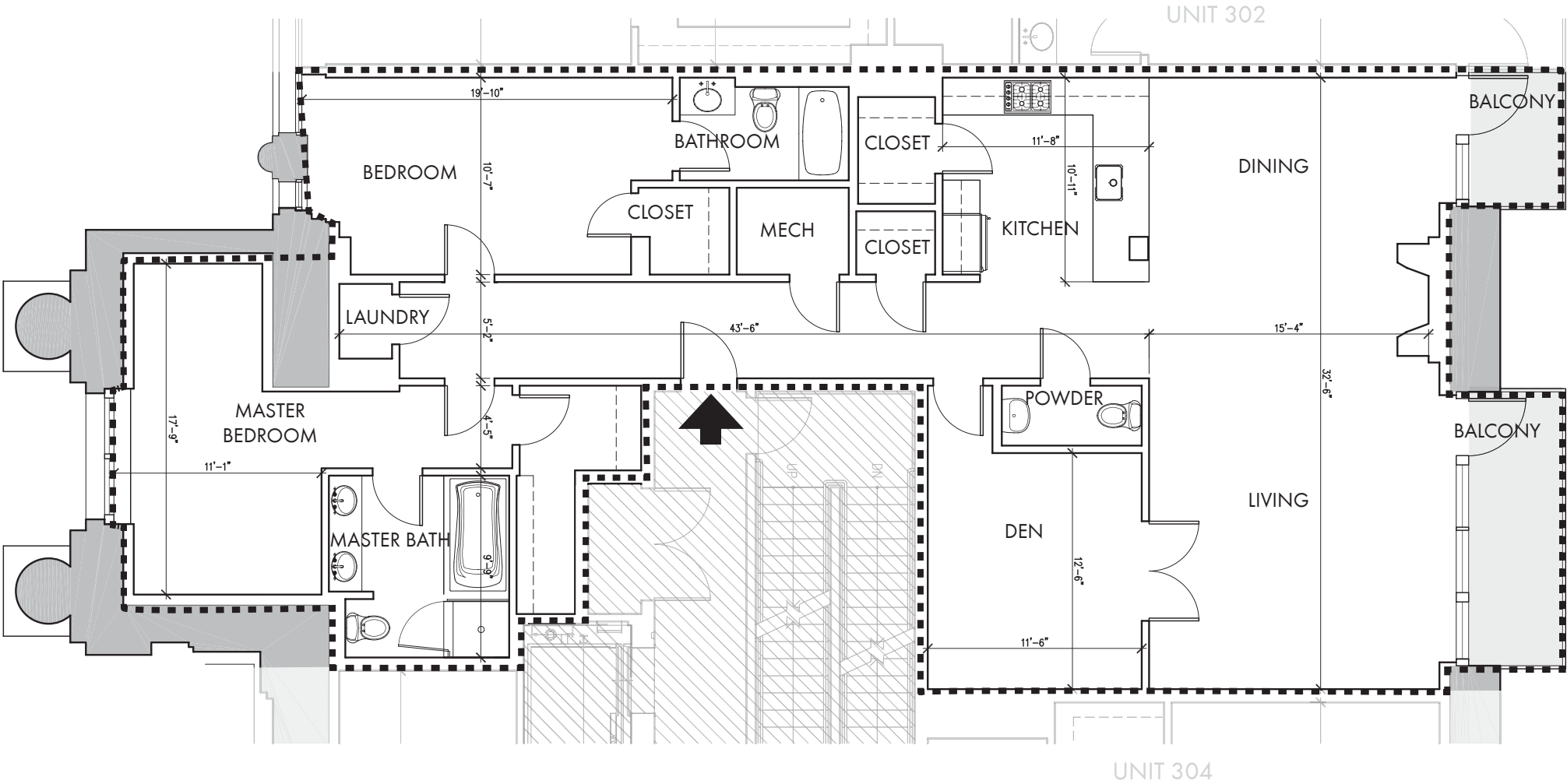
Line of Limit of Ownership:

Common Area:

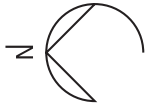
Unit Entrance:

Exterior Limited Common Element Area:

prepared by:
GUND PARTNERSHIP
47 THORNDIKE STREET
CAMBRIDGE, MA 02141
(617)250-6800



Aprox. Scale 1/8" = 1-0"






Whitehall Condominium
2420 Beacon Street
Brighton, MA 02467

I hereby certify that this plan shows the unit designation of the unit being conveyed and of immediately adjoining units and that it fully and accurately depicts the layout of the unit, its location, approximate dimensions, approximate area, main entrance, and immediate common areas to which it has access as built. I also certify that this plan was prepared in accordance with the rules and regulations of the Massachusetts registrar of deeds as amended January 1 1976.

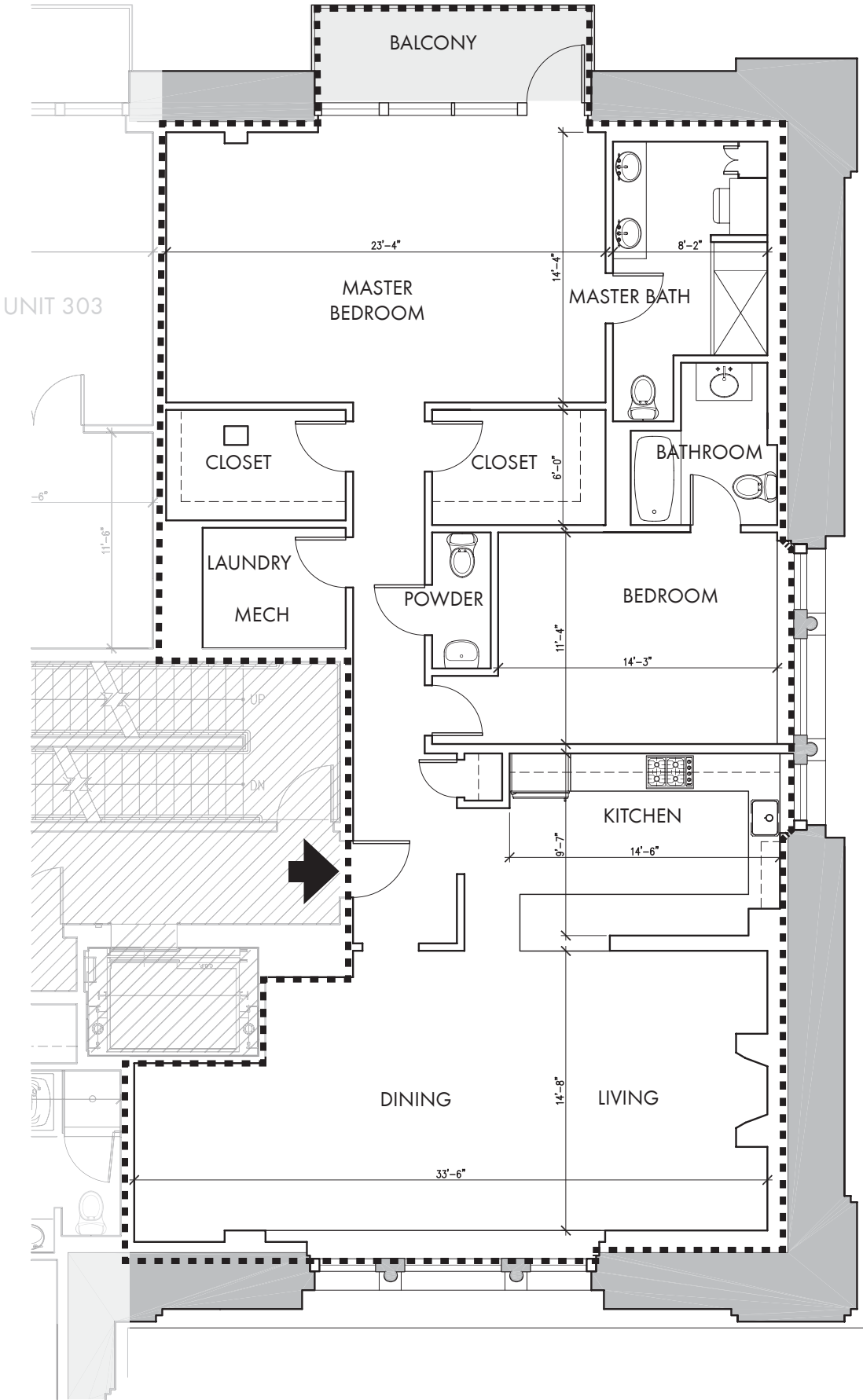
GUNDPARTNERSHIP
Graham Gund
Registered Architect
November 29,2006

Unit: **304**
Approximate Int. Area : 1831 sqft
Approximate Ext.
Limited Common
Element Area: 63 sqft

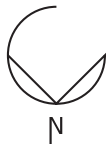
Drawing Key:

Line of Limit of Ownership:
Common Area:	
Unit Entrance:	
Exterior Limited Common Element Area:	

prepared by:
GUND PARTNERSHIP
47 THORNDIKE STREET
CAMBRIDGE, MA 02141
(617)250-6800



Aprox. Scale 1/8" = 1-0"



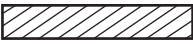
I hereby certify that this plan shows the unit designation of the unit being conveyed and of immediately adjoining units and that it fully and accurately depicts the layout of the unit, its location, approximate dimensions, approximate area, main entrance, and immediate common areas to which it has access as built. I also certify that this plan was prepared in accordance with the rules and regulations of the Massachusetts registrar of deeds as amended January 1 1976.


GUNDPARTNERSHIP
Graham Gund
Registered Architect
November 29,2006


Unit: **401**
Approximate Int. Area : 1895 sqft
Approximate Ext.
Limited Common
Element Area: 47 sqft

Drawing Key:

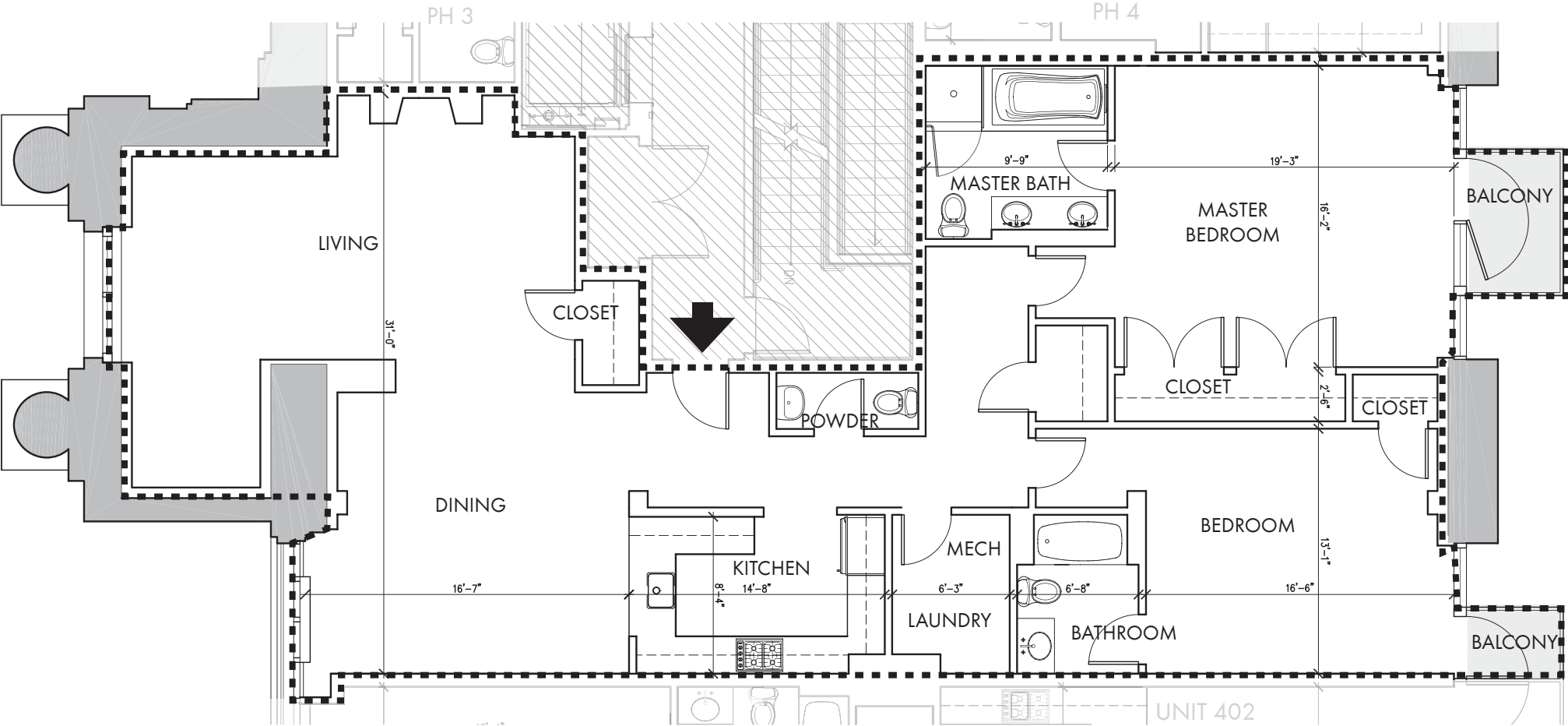
Line of Limit of Ownership: - - - - -

Common Area: 

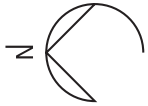
Unit Entrance: 

Exterior Limited Common Element Area: 

prepared by:
GUND PARTNERSHIP
47 THORNDIKE STREET
CAMBRIDGE, MA 02141
(617)250-6800



Aprox. Scale 1/8" = 1-0"

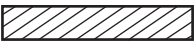




I hereby certify that this plan shows the unit designation of the unit being conveyed and of immediately adjoining units and that it fully and accurately depicts the layout of the unit, its location, approximate dimensions, approximate area, main entrance, and immediate common areas to which it has access as built. I also certify that this plan was prepared in accordance with the rules and regulations of the Massachusetts registrar of deeds as amended January 1 1976.

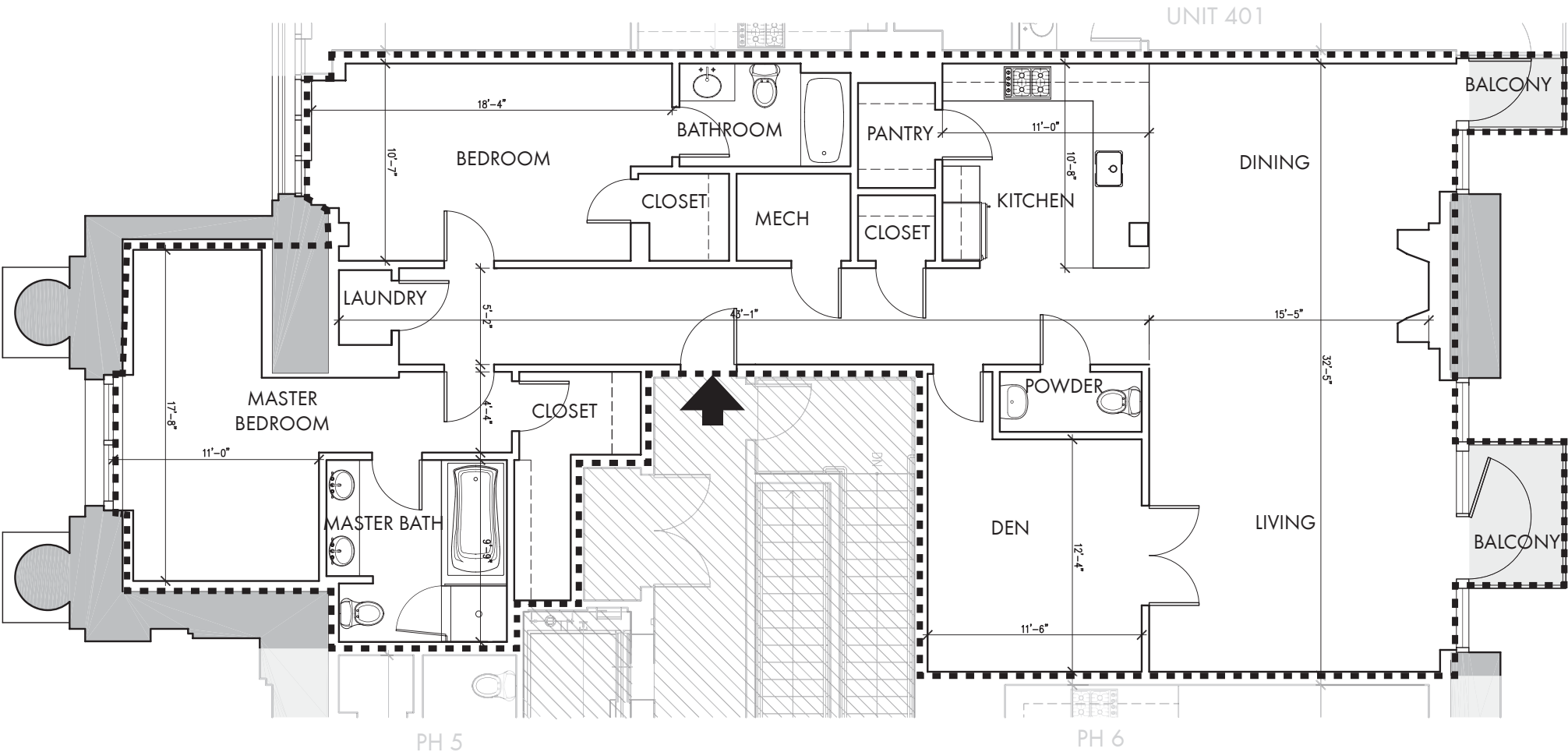
GUNDPARTNERSHIP
Graham Gund
Registered Architect
November 29,2006

Unit: **402**
Approximate Int. Area : 1900 sqft
Approximate Ext.
Limited Common
Element Area: 47 sqft

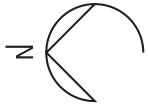
Drawing Key:

Line of Limit of Ownership:
Common Area:	
Unit Entrance:	
Exterior Limited Common Element Area:	

prepared by:
GUND PARTNERSHIP
47 THORNDIKE STREET
CAMBRIDGE, MA 02141
(617)250-6800



Aprox. Scale 1/8" = 1-0"






I hereby certify that this plan shows the unit designation of the unit being conveyed and of immediately adjoining units and that it fully and accurately depicts the layout of the unit, its location, approximate dimensions, approximate area, main entrance, and immediate common areas to which it has access as built. I also certify that this plan was prepared in accordance with the rules and regulations of the Massachusetts registrar of deeds as amended January 1 1976.

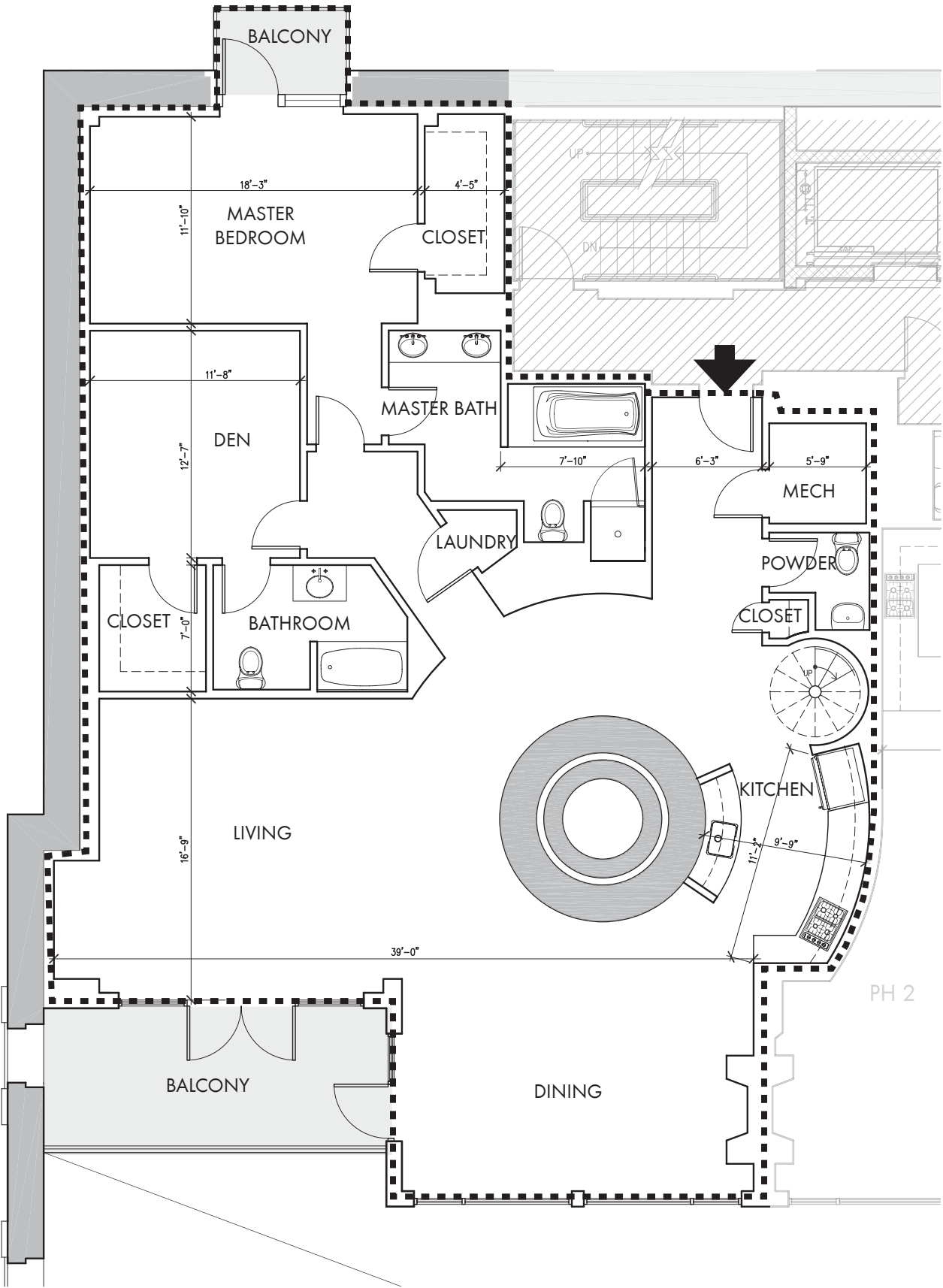
GUNDPARTNERSHIP
Graham Gund
Registered Architect
November 29,2006

Unit: **PH 1**
Approximate Int. Area : 2094 sqft
Approximate Ext.
Limited Common
Element Area: 1325 sqft*

Drawing Key:

Line of Limit of Ownership:	-----
Common Area:	
Unit Entrance:	
Exterior Limited Common Element Area:	

prepared by:
GUND PARTNERSHIP
47 THORNDIKE STREET
CAMBRIDGE, MA 02141
(617)250-6800



Aprox. Scale 1/8" = 1-0"

* Includes roof deck



I hereby certify that this plan shows the unit designation of the unit being conveyed and of immediately adjoining units and that it fully and accurately depicts the layout of the unit, its location, approximate dimensions, approximate area, main entrance, and immediate common areas to which it has access as built. I also certify that this plan was prepared in accordance with the rules and regulations of the Massachusetts registrar of deeds as amended January 1 1976.

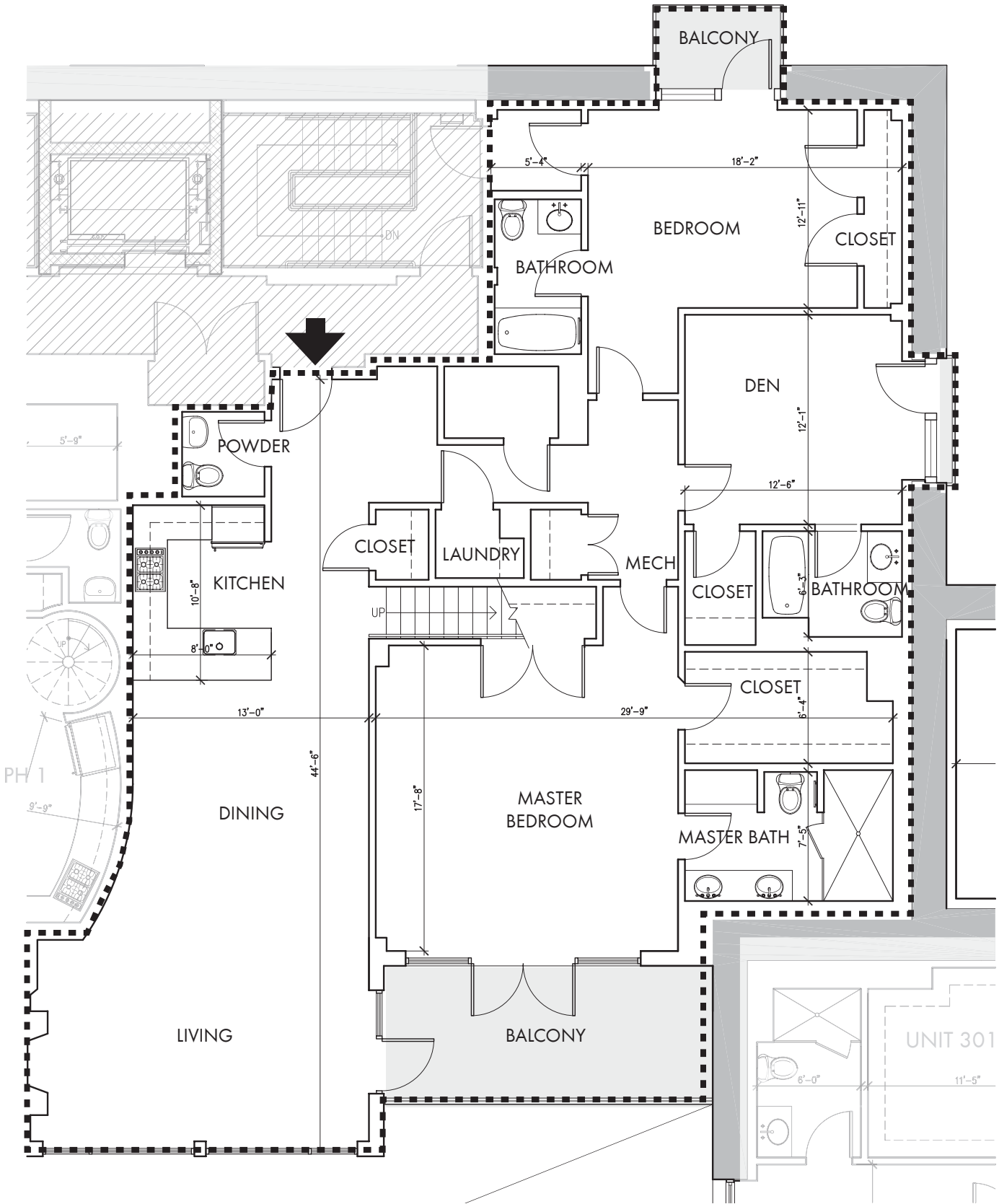
GUNDPARTNERSHIP
Graham Gund
Registered Architect
November 29,2006

Unit: **PH 2**
Approximate Int. Area : 2083 sqft
Approximate Ext.
Limited Common
Element Area: 950 sqft*

Drawing Key:

Line of Limit of Ownership:	-----
Common Area:	
Unit Entrance:	
Exterior Limited Common Element Area:	

prepared by:
GUND PARTNERSHIP
47 THORNDIKE STREET
CAMBRIDGE, MA 02141
(617)250-6800



Aprox. Scale 1/8" = 1-0"

* Includes roof deck



Whitehall Condominium
2420 Beacon Street
Brighton, MA 02467

I hereby certify that this plan shows the unit designation of the unit being conveyed and of immediately adjoining units and that it fully and accurately depicts the layout of the unit, its location, approximate dimensions, approximate area, main entrance, and immediate common areas to which it has access as built. I also certify that this plan was prepared in accordance with the rules and regulations of the Massachusetts registrar of deeds as amended January 1 1976.

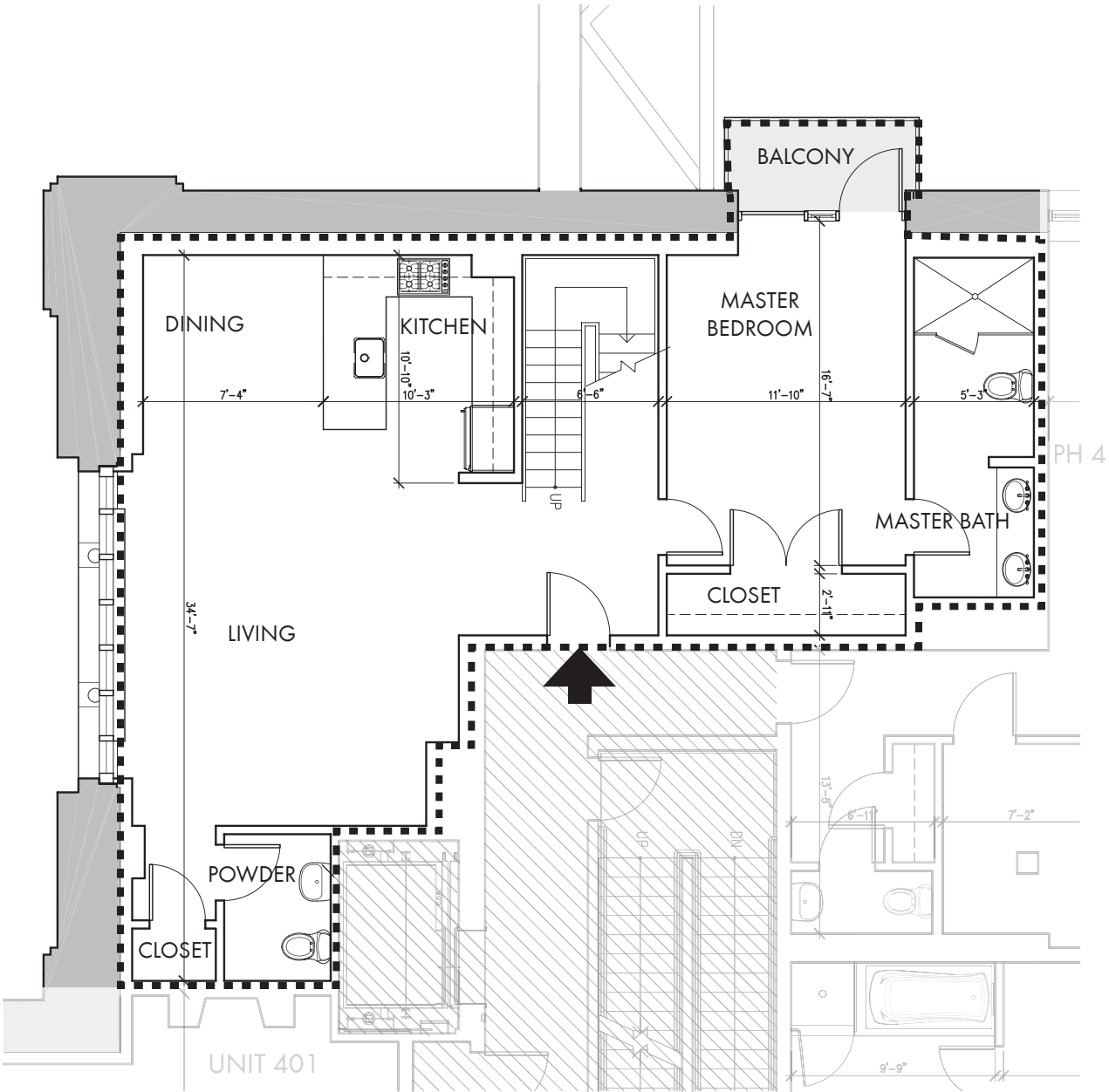
GUNDPARTNERSHIP
Graham Gund
Registered Architect
November 29,2006

Unit: **PH 3**
Approximate Int. Area : 1957 sqft
Approximate Ext.
Limited Common
Element Area: 1387 sqft*

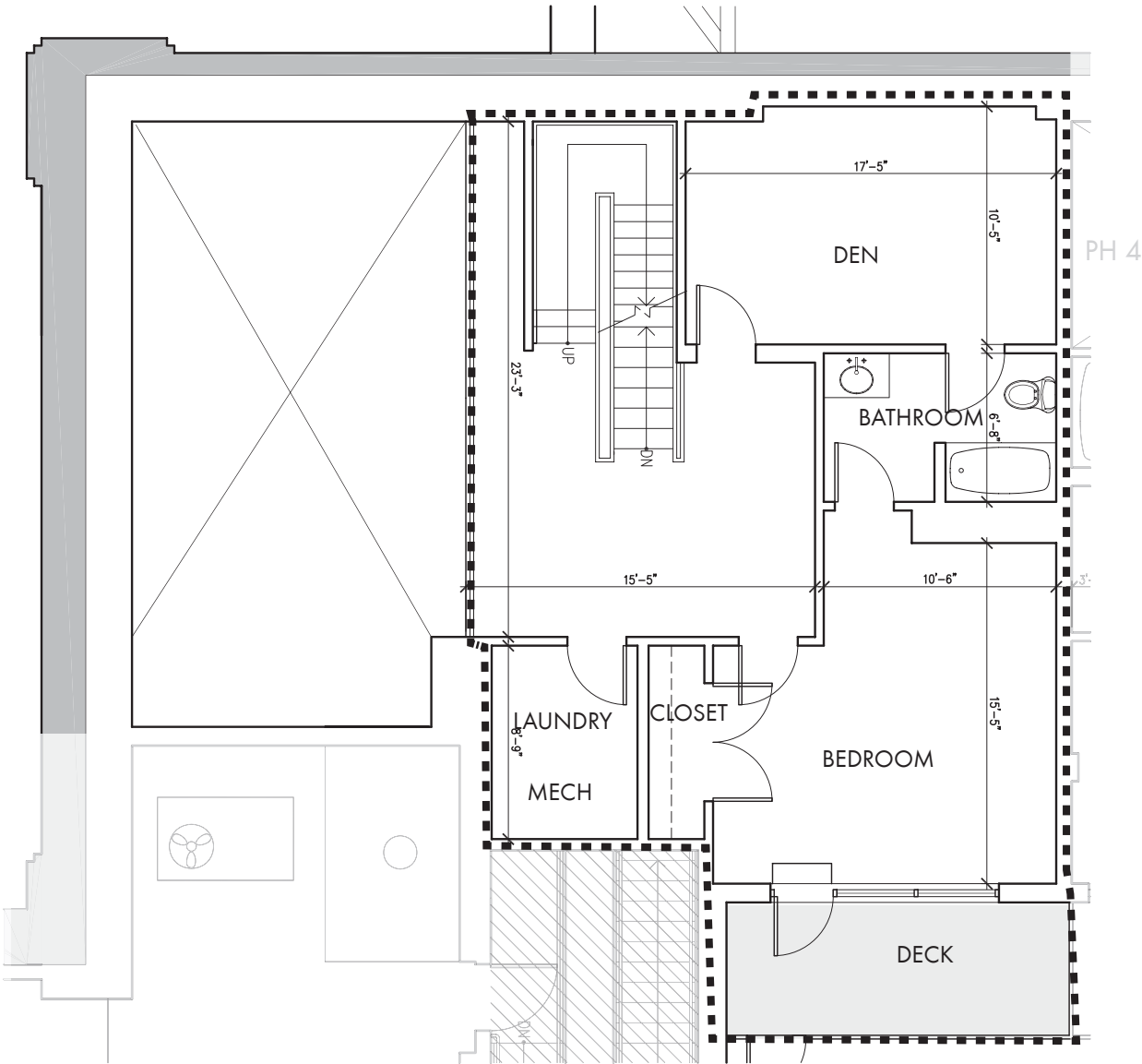
Drawing Key:

Line of Limit of Ownership:
Common Area:	
Unit Entrance:	
Exterior Limited Common Element Area:	

prepared by:
GUND PARTNERSHIP
47 THORNDIKE STREET
CAMBRIDGE, MA 02141
(617)250-6800



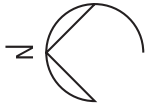
Entry level



Level two

Aprox. Scale 1/8" = 1-0"

* Includes roof deck



Whitehall Condominium
2420 Beacon Street
Brighton, MA 02467

I hereby certify that this plan shows the unit designation of the unit being conveyed and of immediately adjoining units and that it fully and accurately depicts the layout of the unit, its location, approximate dimensions, approximate area, main entrance, and immediate common areas to which it has access as built. I also certify that this plan was prepared in accordance with the rules and regulations of the Massachusetts registrar of deeds as amended January 1 1976.

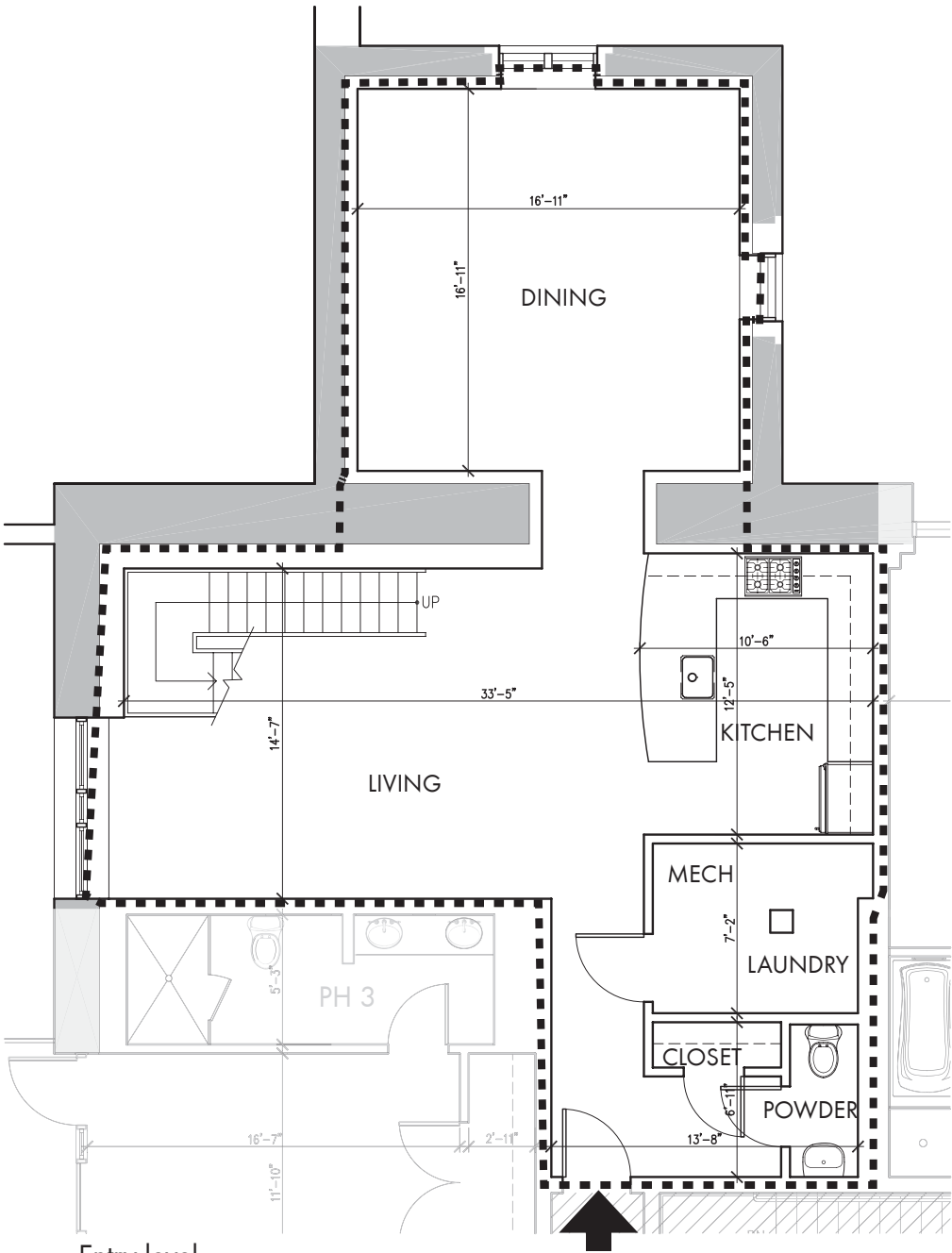
GUNDPARTNERSHIP
Graham Gund
Registered Architect
November 29,2006

Unit: **PH 4**
Approximate Int. Area : 2329 sqft
Approximate Ext.
Limited Common
Element Area: 687 sqft*

Drawing Key:

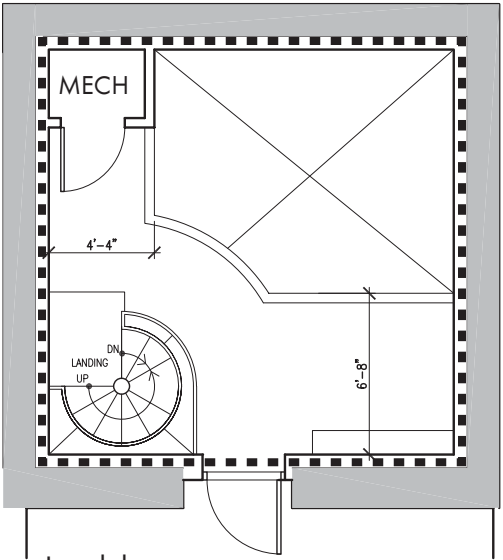
Line of Limit of Ownership:	-----
Common Area:	▨
Unit Entrance:	➔
Exterior Limited Common Element Area:	▬

prepared by:
GUND PARTNERSHIP
47 THORNDIKE STREET
CAMBRIDGE, MA 02141
(617)250-6800

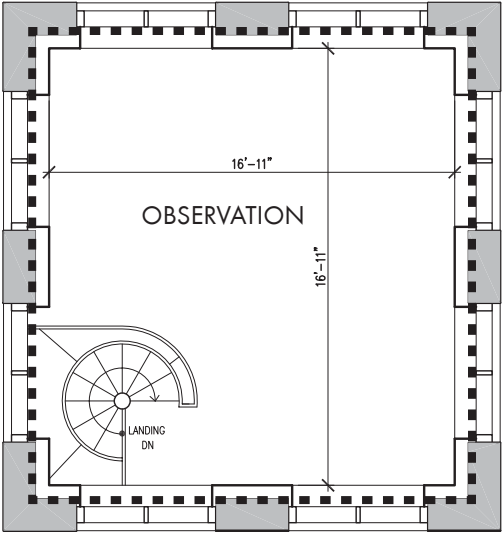


Entry level

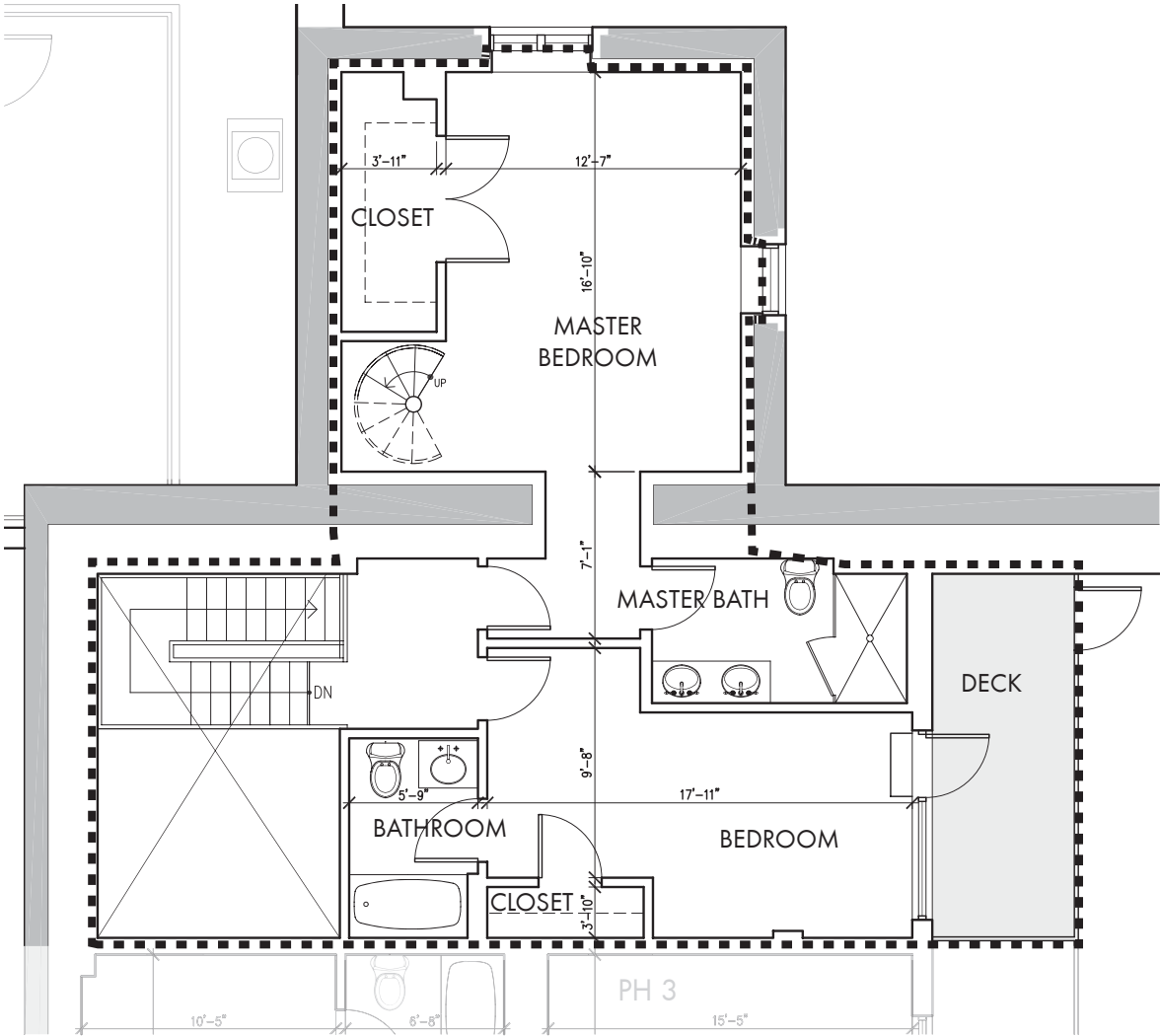
Aprox. Scale 1/8" = 1-0"



Level three

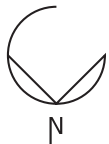


Level four



Level two

* Includes roof deck



Whitehall Condominium

2420 Beacon Street
Brighton, MA 02467

I hereby certify that this plan shows the unit designation of the unit being conveyed and of immediately adjoining units and that it fully and accurately depicts the layout of the unit, its location, approximate dimensions, approximate area, main entrance, and immediate common areas to which it has access as built. I also certify that this plan was prepared in accordance with the rules and regulations of the Massachusetts registrar of deeds as amended January 1 1976.

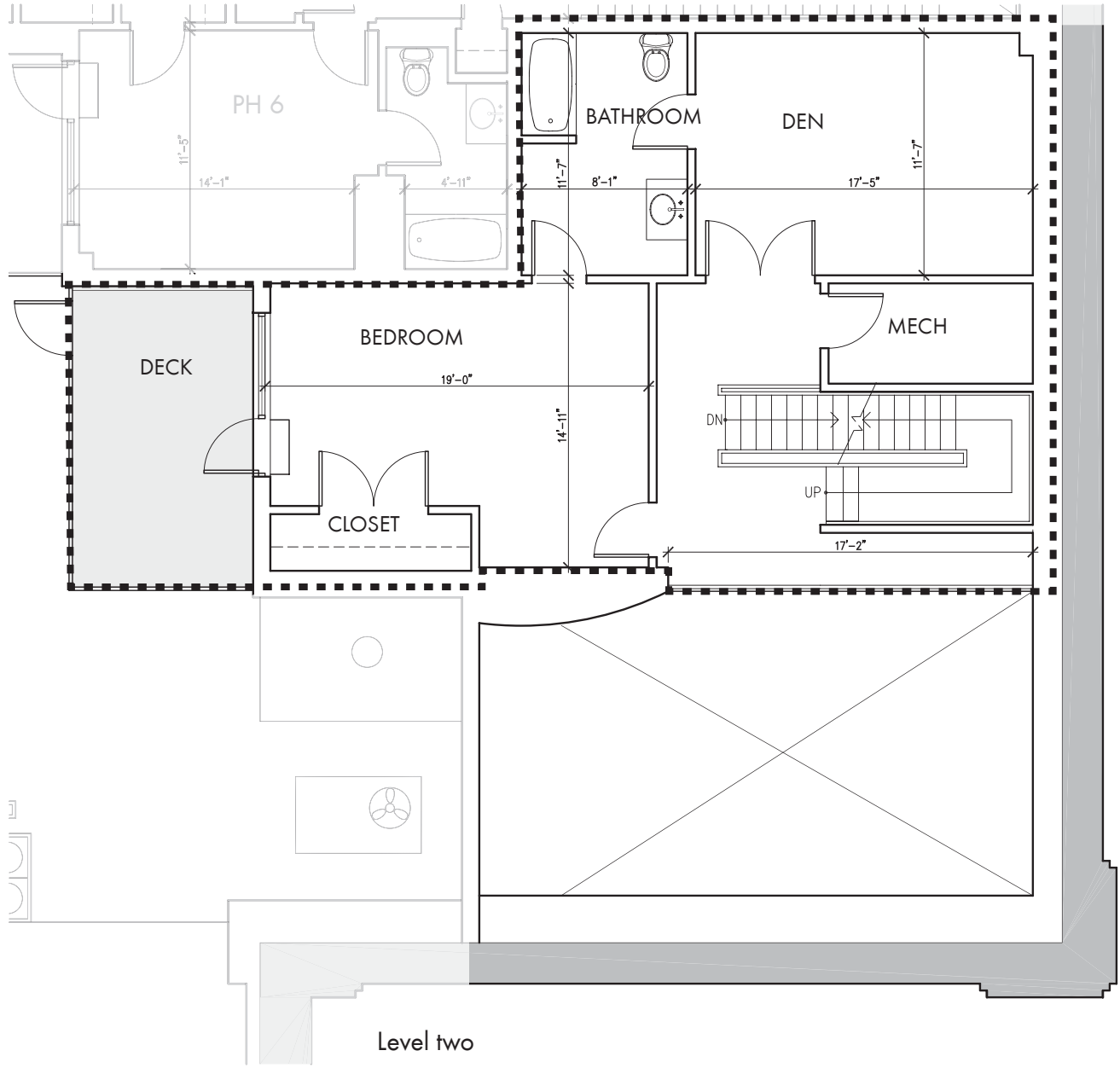
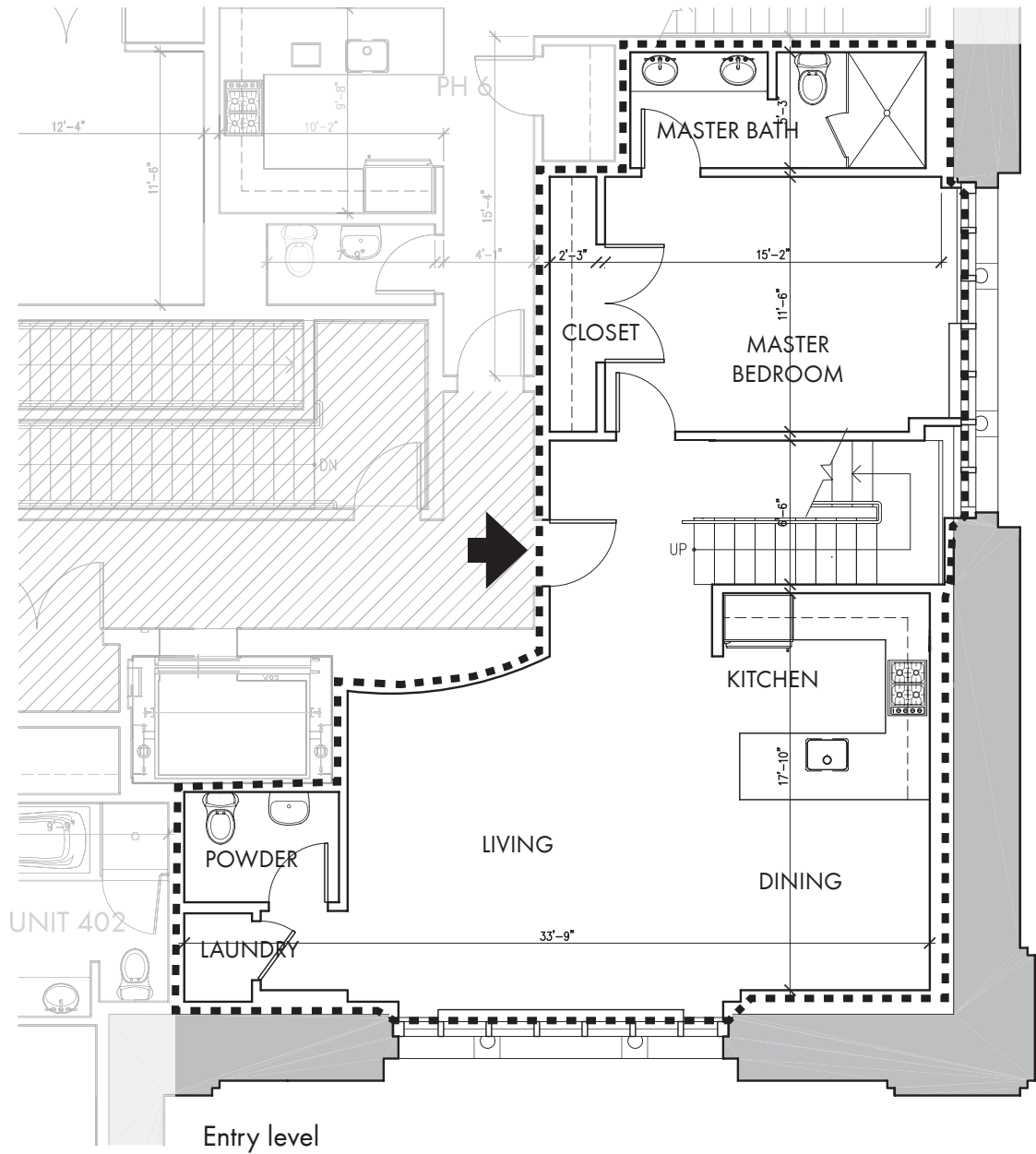
GUNDPARTNERSHIP
Graham Gund
Registered Architect
November 29,2006

Unit: **PH 5**
Approximate Int. Area : 1884 sqft
Approximate Ext.
Limited Common
Element Area: 1118 sqft*

Drawing Key:

Line of Limit of Ownership:	-----
Common Area:	
Unit Entrance:	
Exterior Limited Common Element Area:	

prepared by:
GUND PARTNERSHIP
47 THORNDIKE STREET
CAMBRIDGE, MA 02141
(617)250-6800



Aprox. Scale 1/8" = 1-0"

* Includes roof deck



Whitehall Condominium
2420 Beacon Street
Brighton, MA 02467

I hereby certify that this plan shows the unit designation of the unit being conveyed and of immediately adjoining units and that it fully and accurately depicts the layout of the unit, its location, approximate dimensions, approximate area, main entrance, and immediate common areas to which it has access as built. I also certify that this plan was prepared in accordance with the rules and regulations of the Massachusetts registrar of deeds as amended January 1 1976.

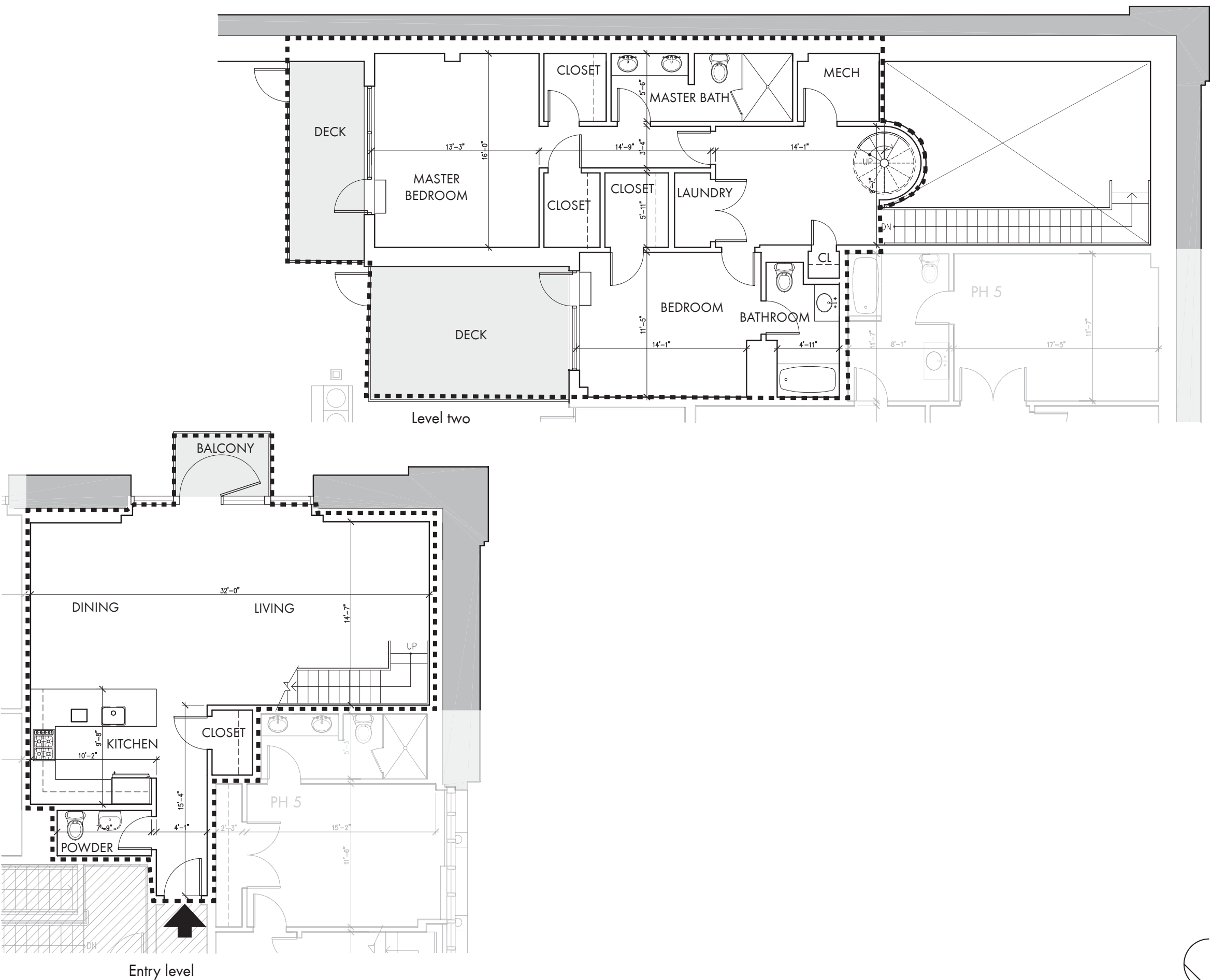
GUNDPARTNERSHIP
Graham Gund
Registered Architect
November 29,2006

Unit: **PH 6**
Approximate Int. Area : 1730 sqft
Approximate Ext.
Limited Common
Element Area: 1750 sqft*

Drawing Key:

- Line of Limit of Ownership: - - - - -
- Common Area: [Hatched Box]
- Unit Entrance: [Arrow]
- Exterior Limited Common Element Area: [Shaded Box]

prepared by:
GUND PARTNERSHIP
47 THORNDIKE STREET
CAMBRIDGE, MA 02141
(617)250-6800



Aprox. Scale 1/8" = 1-0"

* Includes roof deck

